

## TGB1NLA- 32 63

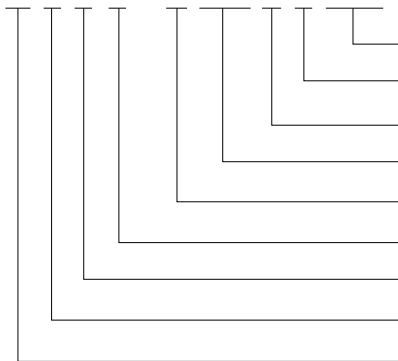


1

TGB1NLA- 32 63  
230V /400V 63A

2

TG B 1N LA - 63 1P+N C 16 30mA



3

3.1

1

1

	TGB1NLA 32	TGB1NLA 63
	GB/T16917.1 IEC61009-1	
	CCC	
	1P+N 2P 3P 3P+N 4P(N )	1P+N 2P 3P 3P+N 4P(N )
Hz		
A I <sub>nm</sub>	32	
A I <sub>e</sub>	6 10 16 20 25 32	40 50 63
V U <sub>b</sub>	AC230(1P+N 2P) AC400(3P 3P+N 4P)	AC230(1P+N 2P) AC400(3P 3P+N 4P)
V U <sub>i</sub>		
kV U <sub>imp</sub>		
kA I <sub>cs</sub>		
kA I <sub>cn</sub>		
	C(5n 10n D)10n 14n	C(5n 10n D)10n 14n
	2	
	MK CF SD MK+CF + M MN M+MN	MK CF SD MK+CF + M MN M+MN
	A	
nA I <sub>n</sub>	15 30 50 75 100 300	30 50 75 100 300
	0.1s	

# TGB1NLA- 32 63

1

	TGB1NLA- 32	TGB1NLA- 63
	20000	20000
	IP20	IP20
	- 35 +70	- 35 +70
	2000m	2000m
(mm <sup>2</sup> )		25
(N <sub>h</sub> )	2	2.5
	II III	II III
	THB5- 7.5	THB5- 7.5

3.2

2

2

	A			
	1. 13In		t 1h	
	1. 45In	1. 13In	t 1h	5s
	2. 55In		1s t 60s In 32A 1s t 120s In 32A	
c	5In		t 0.1s	
	10In		t 0.1s	
	10In		t 0.1s	
	14In		t 0.1s	

30

3.3

C

D

# TGB1NLA- 32 63

3.4

25mm<sup>2</sup>

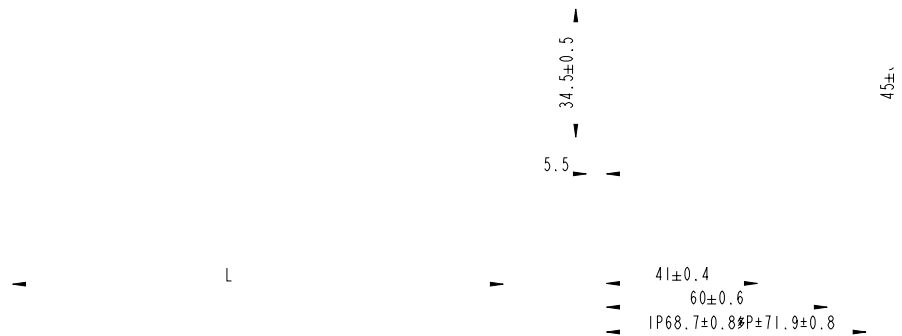
3

2.5N· m

3

A	mm <sup>2</sup>
16 20	2.5
25	
32	
40 50	

4



4

		L (mm)
TGB1NLA- 32		
TGB1NLA- 63		
TGB1NLA- 32	2P	
TGB1NLA- 63	2P	72
TGB1NLA- 32		
TGB1NLA- 63		
TGB1NLA- 32		
TGB1NLA- 63		117
TGB1NLA- 32		117
TGB1NLA- 63		

## TGB1NLA- 32 63

5

5.1		TGB1NLA- 32
5.2	C	
5.3	2P	
5.4	10A	
5.5		30mA
5.6	50	
5.7	TGB1NLA- 32 2P C10 30mA	50